

REVNO.	DESCRIPTIONS	DATE
1	CITY OF WILMINGTON TECHNICAL REVIEW COMMITTEE RE-SUBMITTAL	02-22-2021
2	CITY OF WILMINGTON TECHNICAL REVIEW COMMITTEE RE-SUBMITTAL	02-09-2021
3	NEW HANOVER COUNTY EROSION AND SEDIMENT CONTROL REVISION	02-01-2021
4	NEW HANOVER COUNTY EROSION AND SEDIMENT CONTROL REVISION, CITY OF WILMINGTON TREE REMOVAL REVISION	01-22-2021
5	CITY OF WILMINGTON TECHNICAL REVIEW COMMITTEE AND STORMWATER RE-SUBMITTALS	01-13-2021
6	CAPE FEAR PUBLIC UTILITY AUTHORITY AND NEW HANOVER COUNTY EROSION AND SEDIMENT CONTROL RE-SUBMITTALS	11-18-2020
7	CAPE FEAR PUBLIC UTILITY AUTHORITY AND NEW HANOVER COUNTY EROSION AND SEDIMENT CONTROL RE-SUBMITTALS	9-23-2020
8	CITY OF WILMINGTON TECHNICAL REVIEW COMMITTEE SUBMITTAL	9-16-2020
9	CITY OF WILMINGTON PRE-TECHNICAL REVIEW COMMITTEE SUBMITTAL	8-19-2020

FINAL DRAWING FOR REVIEW PURPOSES ONLY

SEAL

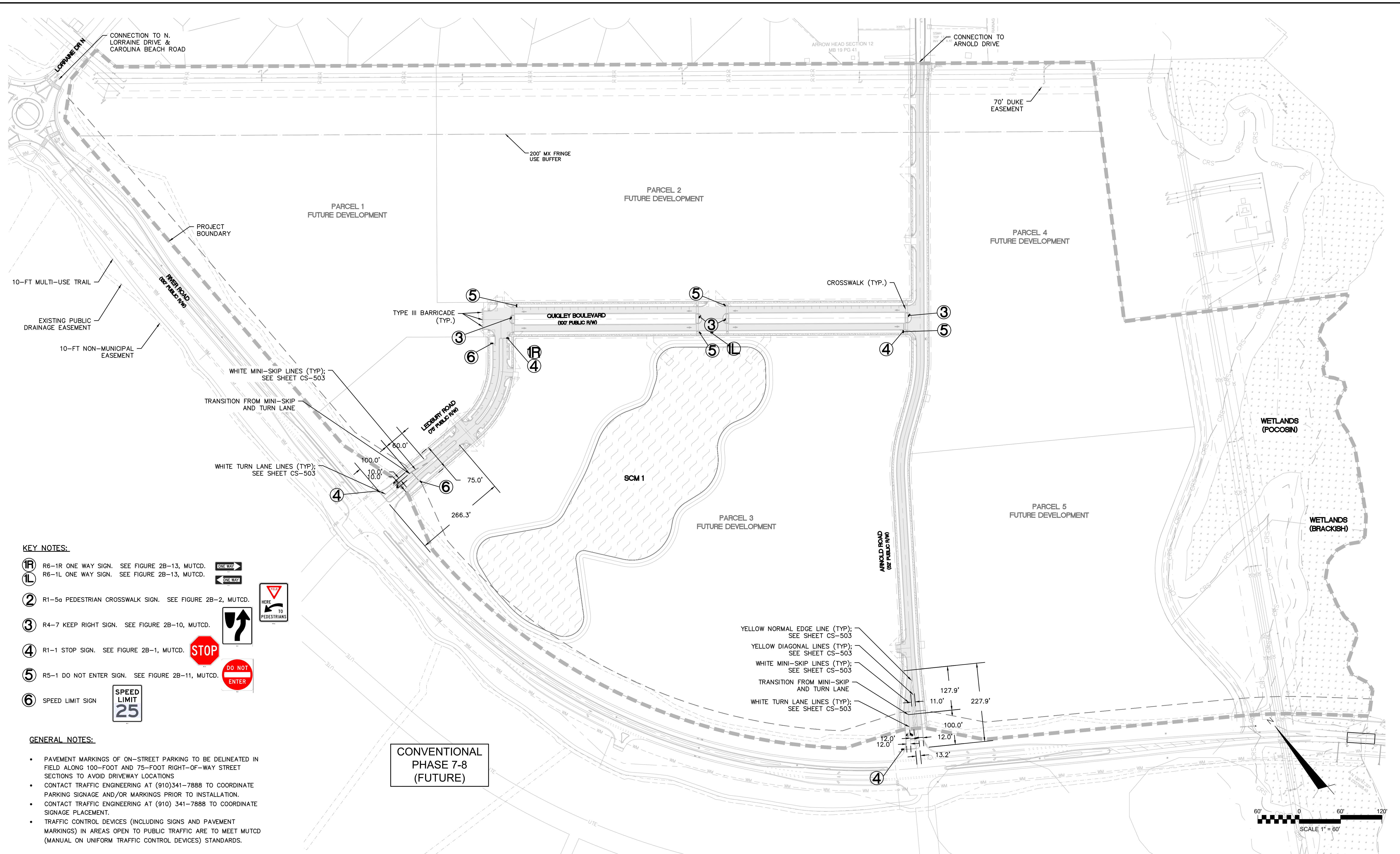
MCKIM & CREED
 243 North Front Street
 Wilmington, North Carolina 28401
 Phone: (910)343-1048, Fax: (910)251-8282
 License: F-1222
 www.mckimcreed.com



RIVERLIGHTS MX-3
 MASONBORO TOWNSHIP, WILMINGTON, NEW HANOVER COUNTY, NORTH CAROLINA

ENLARGED SITE PLAN

DATE: 08/19/2020	SCALE: 1"=60'	M&C FILE NUMBER: CS-102
M&C PROJ. # 02735-0285	HORIZONTAL: 1"=60'	DRAWING NUMBER: 11
DRAWN: EEM/JEB	VERTICAL: N/A	
DESIGNED: EEM		
CHECKED: KCBE		
PROJ. MGR: KCBE		
STATUS: PRELIMINARY DESIGN		REVISION: 1
NOT FOR CONSTRUCTION		



- KEY NOTES:**
- ①R R6-1R ONE WAY SIGN. SEE FIGURE 2B-13, MUTCD.
 - ①L R6-1L ONE WAY SIGN. SEE FIGURE 2B-13, MUTCD.
 - ② R1-5a PEDESTRIAN CROSSWALK SIGN. SEE FIGURE 2B-2, MUTCD.
 - ③ R4-7 KEEP RIGHT SIGN. SEE FIGURE 2B-10, MUTCD.
 - ④ R1-1 STOP SIGN. SEE FIGURE 2B-1, MUTCD.
 - ⑤ R5-1 DO NOT ENTER SIGN. SEE FIGURE 2B-11, MUTCD.
 - ⑥ SPEED LIMIT SIGN

- GENERAL NOTES:**
- PAVEMENT MARKINGS OF ON-STREET PARKING TO BE DELINEATED IN FIELD ALONG 100-FOOT AND 75-FOOT RIGHT-OF-WAY STREET SECTIONS TO AVOID DRIVEWAY LOCATIONS
 - CONTACT TRAFFIC ENGINEERING AT (910)341-7888 TO COORDINATE PARKING SIGNAGE AND/OR MARKINGS PRIOR TO INSTALLATION.
 - CONTACT TRAFFIC ENGINEERING AT (910) 341-7888 TO COORDINATE SIGNAGE PLACEMENT.
 - TRAFFIC CONTROL DEVICES (INCLUDING SIGNS AND PAVEMENT MARKINGS) IN AREAS OPEN TO PUBLIC TRAFFIC ARE TO MEET MUTCD (MANUAL ON UNIFORM TRAFFIC CONTROL DEVICES) STANDARDS.

CONVENTIONAL PHASE 7-8 (FUTURE)

REVNO.	DESCRIPTIONS	DATE
1	CITY OF WILMINGTON TECHNICAL REVIEW COMMITTEE RE-SUBMITTAL	02-22-2021
2	CITY OF WILMINGTON TECHNICAL REVIEW COMMITTEE RE-SUBMITTAL	02-09-2021
3	NEW HANOVER COUNTY EROSION AND SEDIMENT CONTROL REVISION	02-01-2021
4	NEW HANOVER COUNTY EROSION AND SEDIMENT CONTROL REVISION, CITY OF WILMINGTON TREE REMOVAL REVISION	01-22-2021
5	CITY OF WILMINGTON TECHNICAL REVIEW COMMITTEE AND STORMWATER RE-SUBMITTALS	01-13-2021
6	CAPE FEAR PUBLIC UTILITY AUTHORITY AND NEW HANOVER COUNTY EROSION AND SEDIMENT CONTROL RE-SUBMITTALS	11-18-2020
7	CAPE FEAR PUBLIC UTILITY AUTHORITY AND NEW HANOVER COUNTY EROSION AND SEDIMENT CONTROL RE-SUBMITTALS	9-23-2020
8	CITY OF WILMINGTON TECHNICAL REVIEW COMMITTEE SUBMITTAL	9-16-2020
9	CITY OF WILMINGTON PRE-TECHNICAL REVIEW COMMITTEE SUBMITTAL	8-19-2020

FINAL DRAWING FOR REVIEW PURPOSES ONLY

SEAL

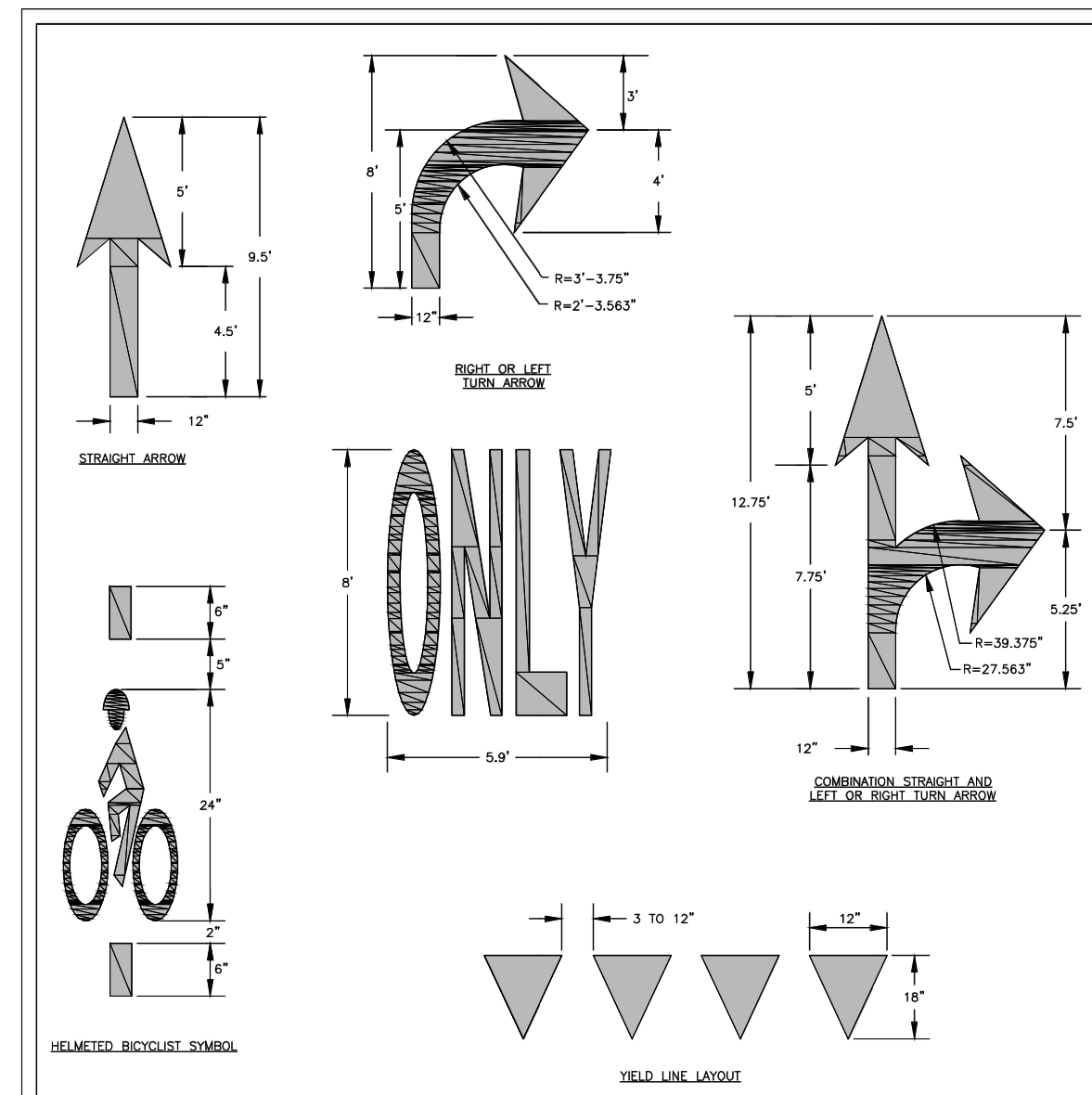
MCKIM & CREED
 243 North Front Street
 Wilmington, North Carolina 28401
 Phone: (910)343-1048, Fax: (910)251-8282
 License: F-1222
 www.mckimcreed.com



RIVERLIGHTS
 NORTH AMERICA SEKISUI HOUSE, LLC

RIVERLIGHTS MX-3
 MASONBORO TOWNSHIP, WILMINGTON, NEW HANOVER COUNTY, NORTH CAROLINA
SIGNAGE AND PAVEMENT MARKING PLAN

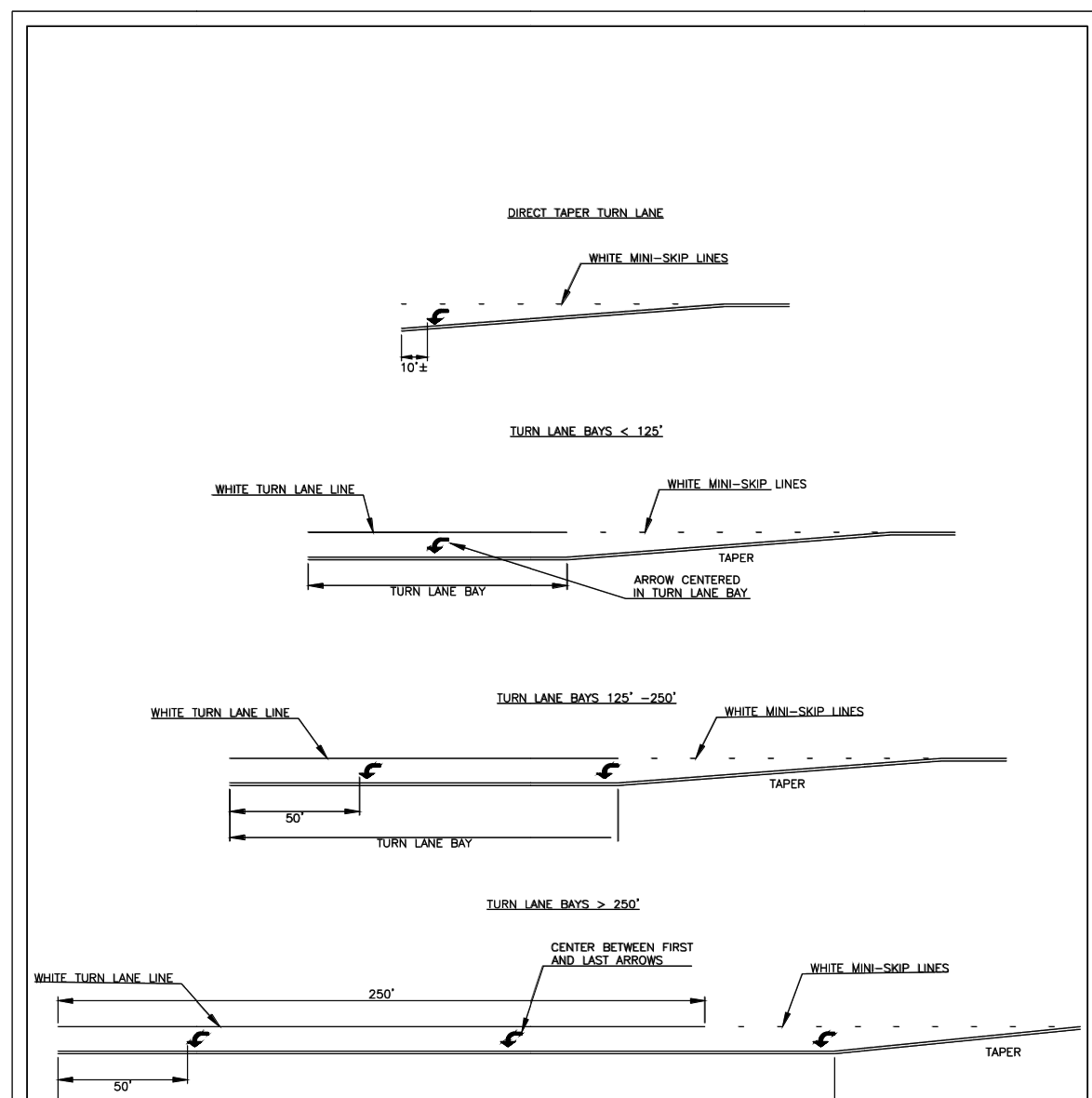
DATE: 08/19/2020	SCALE: HORIZONTAL: 1"=60'	VERTICAL: N/A	M&C FILE NUMBER: CM-101
M&C PROJ. # 02735-0285	DESIGNED: EEM	CHECKED: KCBE	DRAWING NUMBER: 27
PROJ. MGR. KCBE	STATUS: PRELIMINARY DESIGN NOT FOR CONSTRUCTION		



GENERAL NOTES
 1-PAVEMENT MARKINGS, SYMBOLS AND DIMENSIONS SHALL BE DESIGNED PER MUTCD WITH APPROVAL FROM CITY TRAFFIC ENGINEERING, AND INSTALLED IN ACCORDANCE WITH NCDOT DIVISION 12 SPECIFICATIONS. SEE SD 11-01.

STANDARD DETAIL		 CITY OF WILMINGTON ENGINEERING PO BOX 1810 WILMINGTON, NC 28402 (910) 341-7807	SD 11-03
DATE:	OCTOBER, 2012		
DRAWN BY:	JSR		
CHECKED BY:	HDR, P.E.		
SCALE:	NOT TO SCALE	GUIDELINES FOR PAVEMENT MARKINGS AND SYMBOLS	

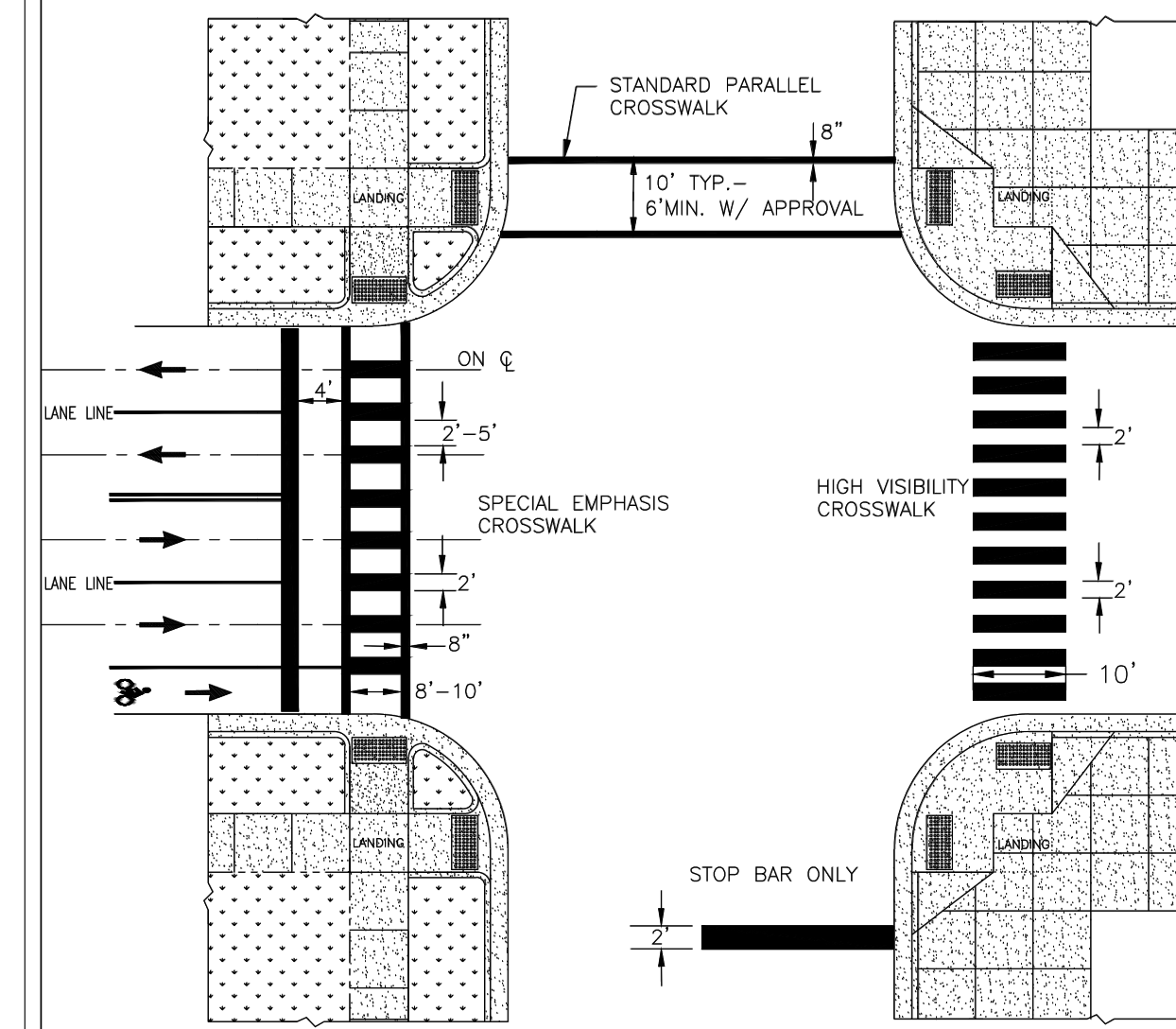
18 GUIDELINES FOR PAVE. MARK. AND SYMBOLS N/A



GENERAL NOTES
 1-PAVEMENT MARKINGS, SYMBOLS AND DIMENSIONS SHALL BE DESIGNED PER MUTCD WITH APPROVAL FROM CITY TRAFFIC ENGINEERING, AND INSTALLED IN ACCORDANCE WITH NCDOT DIVISION 12 SPECIFICATIONS. SEE SD 11-01.

STANDARD DETAIL		 CITY OF WILMINGTON ENGINEERING PO BOX 1810 WILMINGTON, NC 28402 (910) 341-7807	SD 11-08
DATE:	2001		
DRAWN BY:	RLB		
CHECKED BY:	DRB/RF		
SCALE:	NOT TO SCALE	PAVEMENT MARKINGS TURN LANES	

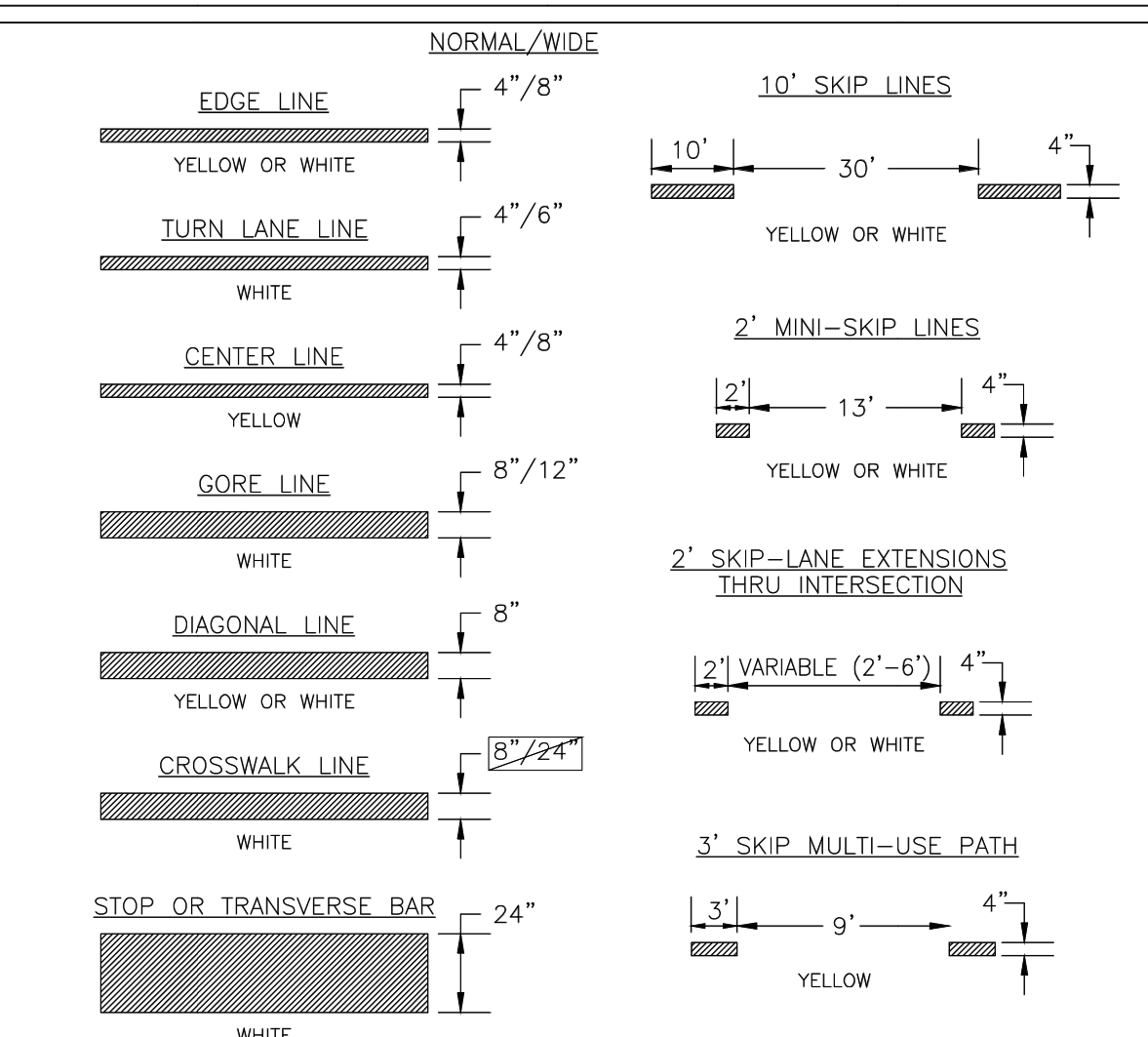
16 PAVEMENT MARKINGS TURN LANES N/A



1-TYPICAL CROSSWALK DIMENSIONS ARE PROVIDED FOR REFERENCE. ALL APPLICATIONS SHALL CONSIDER PEDESTRIAN, BICYCLE AND TRAFFIC CONDITIONS AND ARE SUBJECT TO ADA GUIDELINES AND MATERIAL SPECIFICATIONS. LAYOUTS SHALL BE DIRECTED BY THE ENGINEER.
 2-GENERALLY, STANDARD PARALLEL CROSSWALKS TO BE USED AT SIGNALIZED INTERSECTIONS OR WHERE CROSSWALK TRAFFIC OR CONFLICT POINTS ARE AVERAGE. SPECIAL EMPHASIS CROSSWALKS AND HIGH VISIBILITY CROSSWALKS ARE NEEDED AT BUSY SIGNALIZED INTERSECTIONS AND WHERE BICYCLE AND PEDESTRIAN TRAFFIC REQUIRES INCREASED VISIBILITY.

STANDARD DETAIL		 CITY OF WILMINGTON ENGINEERING PO BOX 1810 WILMINGTON, NC 28402 (910) 341-7807	SD 11-11
DATE:	FEBRUARY, 2012		
DRAWN BY:	JSR		
CHECKED BY:	HDR, P.E.		
SCALE:	NOT TO SCALE	CROSSWALK PAVEMENT MARKINGS	

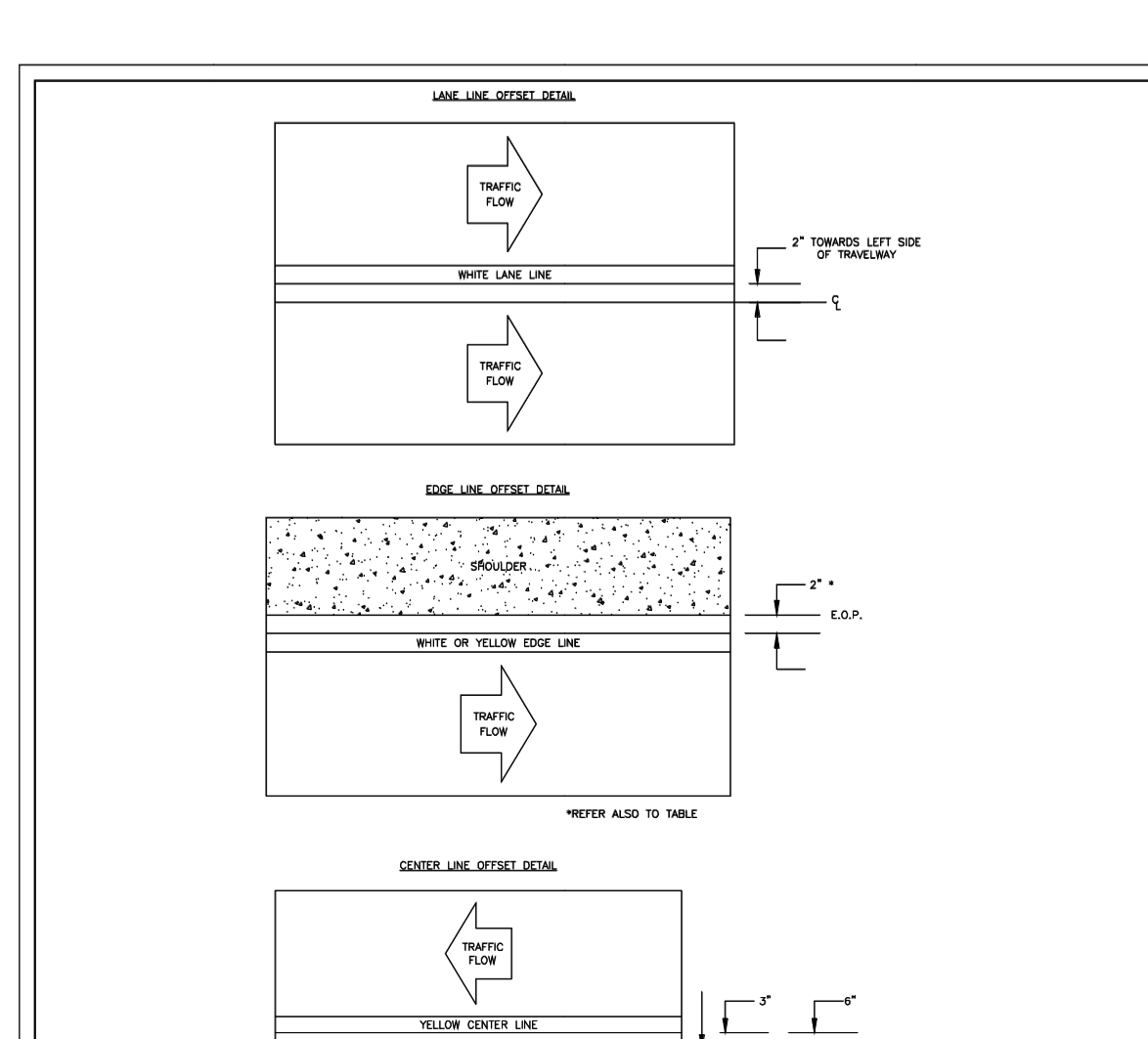
14 CROSSWALK PAVEMENT MARKINGS N/A



1-PAVEMENT MARKINGS AND SYMBOLS SHALL BE DESIGNED PER MUTCD WITH APPROVAL FROM CITY TRAFFIC ENGINEERING, AND INSTALLED IN ACCORDANCE WITH NCDOT DIVISION 12 SPECIFICATIONS.
 2-GENERALLY, PERMANENT MARKINGS WILL BE UNIFORM AND SMOOTH AND WILL CONSIST OF 120MIL OF THERMOPLASTIC FOR ALL LINES AND SYMBOLS; TEMPORARY MARKINGS SHALL CONSISTS OF 15 MIL PAINT, EVERY 6 MONTHS.
 3-DURING APPLICATION THE EXISTING PAVEMENT SHALL NOT SHOW SIGNS OF MOISTURE AND BE CLEAN, FREE OF DIRT AND OIL, ETC. THERMOPLASTIC SHALL ONLY BE INSTALLED WHERE PAVEMENT IS 50° F AND RISING. PAINT SHALL ONLY BE INSTALLED WHERE PAVEMENT IS 40° F AND RISING.

STANDARD DETAIL		 CITY OF WILMINGTON ENGINEERING PO BOX 1810 WILMINGTON, NC 28402 (910) 341-7807	SD 11-01
DATE:	DECEMBER, 2011		
DRAWN BY:	JSR		
CHECKED BY:	HDR, P.E.		
SCALE:	NOT TO SCALE	PAVEMENT MARKINGS LINE TYPES	

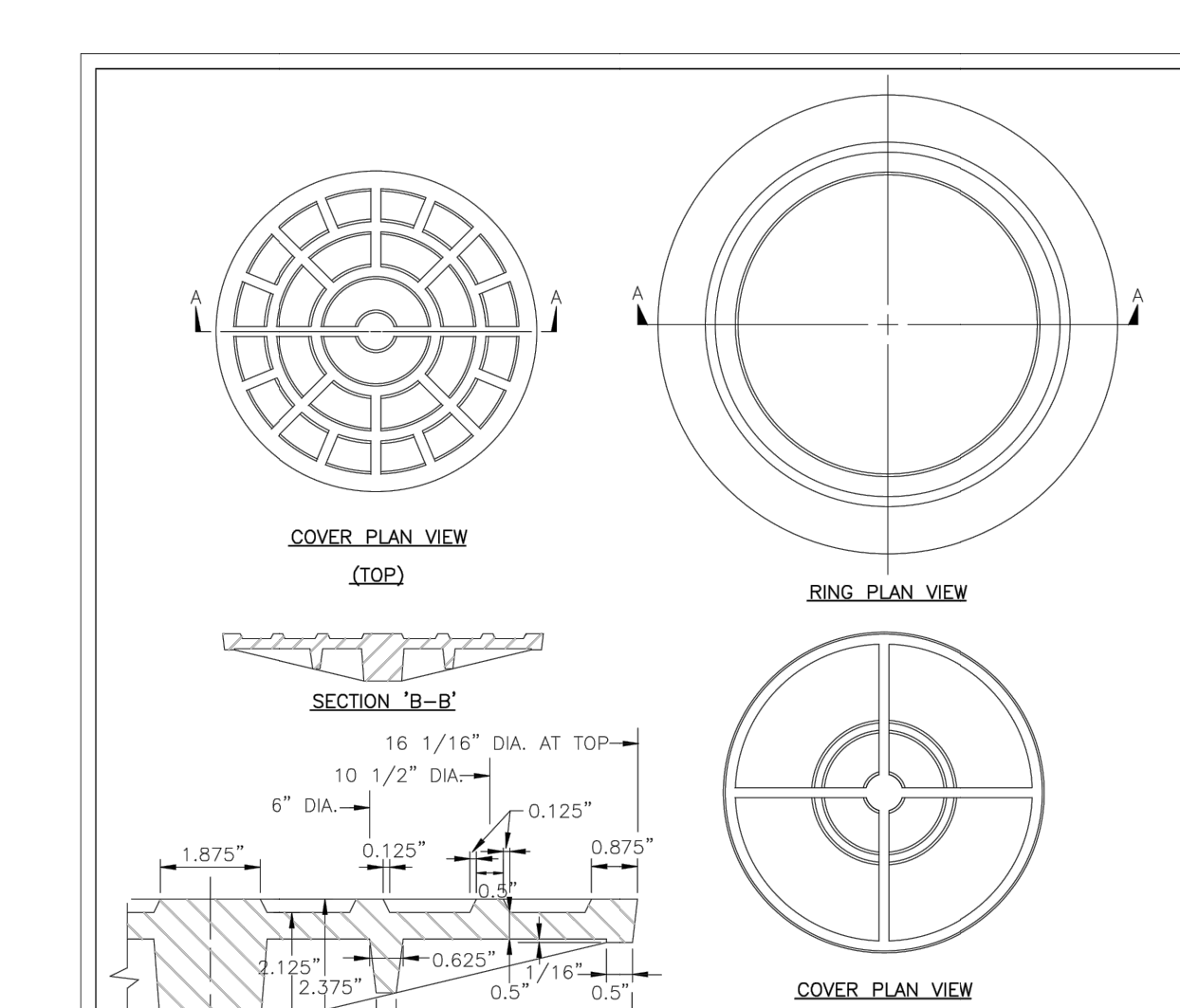
17 PAVEMENT MARKINGS LINE TYPES N/A



1-PAVEMENT MARKINGS AND SYMBOLS SHALL BE DESIGNED PER MUTCD WITH APPROVAL FROM CITY TRAFFIC ENGINEERING, AND INSTALLED IN ACCORDANCE WITH NCDOT DIVISION 12 SPECIFICATIONS.
 2-GENERALLY, PERMANENT MARKINGS WILL BE UNIFORM AND SMOOTH AND WILL CONSIST OF 120MIL OF THERMOPLASTIC FOR ALL LINES AND SYMBOLS; TEMPORARY MARKINGS SHALL CONSISTS OF 15 MIL PAINT, EVERY 6 MONTHS.
 3-DURING APPLICATION THE EXISTING PAVEMENT SHALL NOT SHOW SIGNS OF MOISTURE AND BE CLEAN, FREE OF DIRT AND OIL, ETC. THERMOPLASTIC SHALL ONLY BE INSTALLED WHERE PAVEMENT IS 50° F AND RISING. PAINT SHALL ONLY BE INSTALLED WHERE PAVEMENT IS 40° F AND RISING.

STANDARD DETAIL		 CITY OF WILMINGTON ENGINEERING PO BOX 1810 WILMINGTON, NC 28402 (910) 341-7807	SD 11-02
DATE:	2003		
DRAWN BY:	RLB		
CHECKED BY:	RLB/RF		
SCALE:	NOT TO SCALE	PAVEMENT MARKING OFFSETS	

15 PAVEMENT MARKING OFFSETS N/A



1-PAVEMENT MARKINGS AND SYMBOLS SHALL BE DESIGNED PER MUTCD WITH APPROVAL FROM CITY TRAFFIC ENGINEERING, AND INSTALLED IN ACCORDANCE WITH NCDOT DIVISION 12 SPECIFICATIONS.
 2-GENERALLY, PERMANENT MARKINGS WILL BE UNIFORM AND SMOOTH AND WILL CONSIST OF 120MIL OF THERMOPLASTIC FOR ALL LINES AND SYMBOLS; TEMPORARY MARKINGS SHALL CONSISTS OF 15 MIL PAINT, EVERY 6 MONTHS.
 3-DURING APPLICATION THE EXISTING PAVEMENT SHALL NOT SHOW SIGNS OF MOISTURE AND BE CLEAN, FREE OF DIRT AND OIL, ETC. THERMOPLASTIC SHALL ONLY BE INSTALLED WHERE PAVEMENT IS 50° F AND RISING. PAINT SHALL ONLY BE INSTALLED WHERE PAVEMENT IS 40° F AND RISING.

STANDARD DETAIL		 CITY OF WILMINGTON ENGINEERING PO BOX 1810 WILMINGTON, NC 28402 (910) 341-7807	SD 14-05
DATE:	2001		
DRAWN BY:	JSR/CMR		
CHECKED BY:	B.P., P.E.		
SCALE:	NOT TO SCALE	MONUMENT CASING DETAIL	

13 MONUMENT CASING DETAIL N/A

REVNO.	DESCRIPTION	DATE
1	CITY OF WILMINGTON TECHNICAL REVIEW COMMITTEE RE-SUBMITTAL	02-22-2021
2	CITY OF WILMINGTON TECHNICAL REVIEW COMMITTEE RE-SUBMITTAL	02-09-2021
3	NEW HANOVER COUNTY EROSION AND SEDIMENT CONTROL REVISION	02-01-2021
4	NEW HANOVER COUNTY EROSION AND SEDIMENT CONTROL REVISION CITY OF WILMINGTON TREE REMOVAL REVISION	01-22-2021
5	CITY OF WILMINGTON TECHNICAL REVIEW COMMITTEE AND STORMWATER RE-SUBMITTALS	01-13-2021
6	CAPE FEAR PUBLIC UTILITY AUTHORITY AND NEW HANOVER COUNTY EROSION AND SEDIMENT CONTROL RE-SUBMITTALS	11-18-2020
7	CAPE FEAR PUBLIC UTILITY AUTHORITY AND NEW HANOVER COUNTY EROSION AND SEDIMENT CONTROL SUBMITTALS	9-23-2020
8	CITY OF WILMINGTON TECHNICAL REVIEW COMMITTEE SUBMITTAL	9-16-2020
9	CITY OF WILMINGTON PRE-TECHNICAL REVIEW COMMITTEE SUBMITTAL	8-19-2020

FINAL DRAWING FOR REVIEW PURPOSES ONLY

SEAL

243 North Front Street
 Wilmington, North Carolina 28401
 Phone: (910)343-1048, Fax: (910)251-8282
 License: F-1222
 www.mckimcreed.com

RIVERLIGHTS®
 NORTH AMERICA SEKISUI HOUSE, LLC

RIVERLIGHTS MX-3
 MASONBORO TOWNSHIP, WILMINGTON, NEW HANOVER COUNTY, NORTH CAROLINA
 SITE DETAILS

DATE: 08/19/2020
 MCE PROJ. # 02735-0285
 DRAWN: EEM/JEB
 DESIGNED: EEM
 CHECKED: KCBE
 PROJ. MGR.: KCBE

SCALE: HORIZONTAL: N/A
 VERTICAL: N/A

MAC FILE NUMBER: CS-503
 DRAWING NUMBER: 32

STATUS: PRELIMINARY DESIGN
 NOT FOR CONSTRUCTION